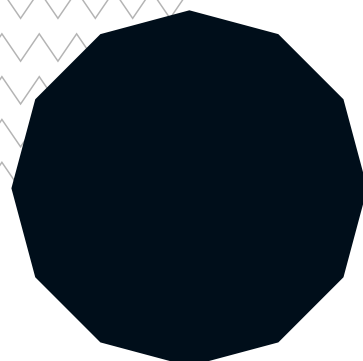
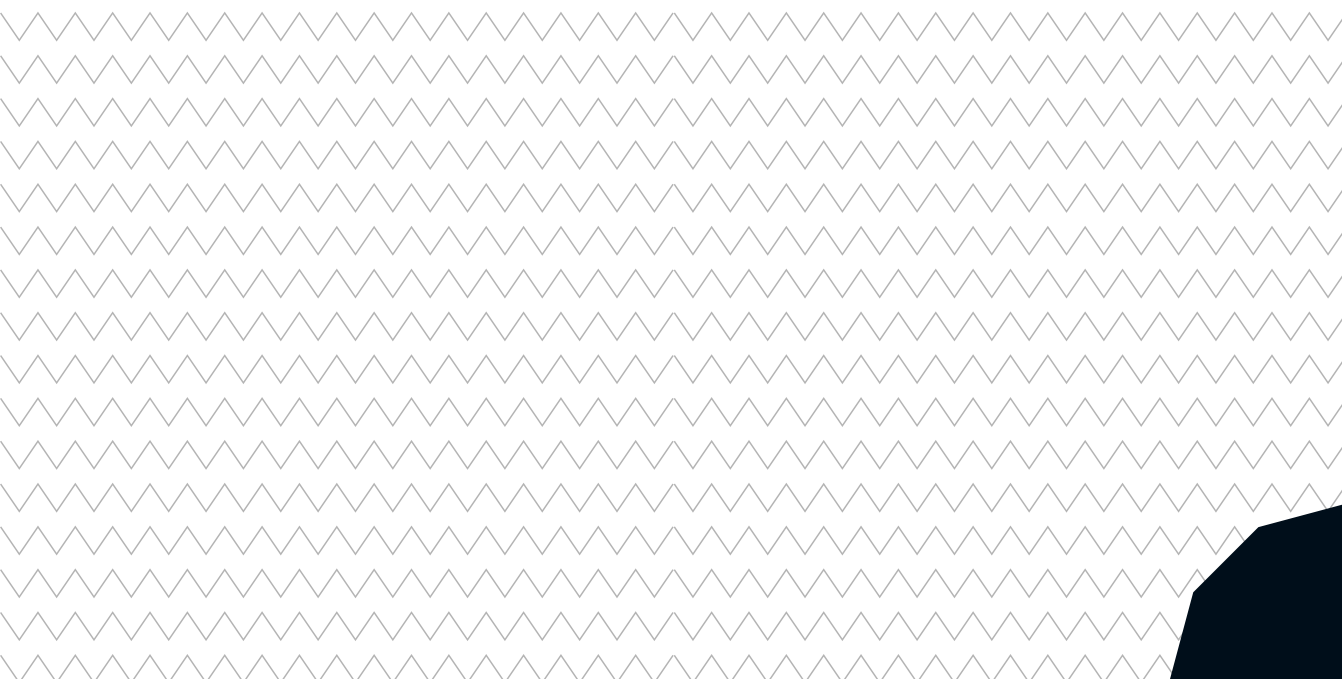
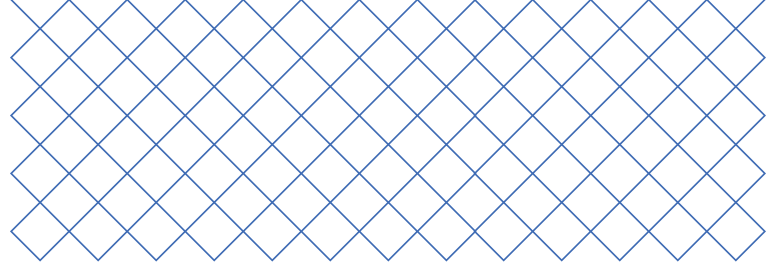




# Material Station

## Spare parts catalogue





# Table of contents

Accessories	3
Cables	4
Dehumidifier	6
Electronics	7
Extrusion train	8
Glass door	10
Housing	11
Interior	13
Nuts & Bolts	15
Packaging	19

# Accessories



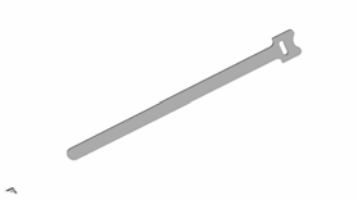
## 216212 - Wire cutters

Wire cutter



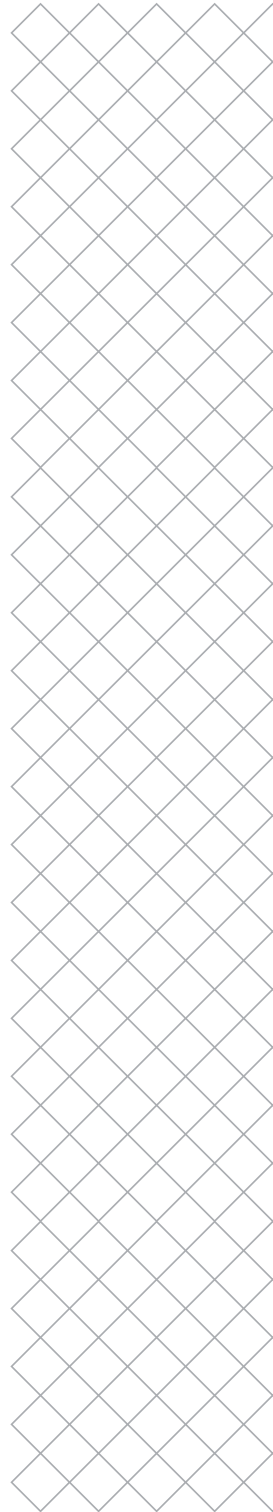
## 215718 - Spool holder cap

Reelholder replacement plug



## 216612 - Velcro cable binder

Velcro cable binder



# Cables



## 211781 - 24 V Cable

24 V Cable



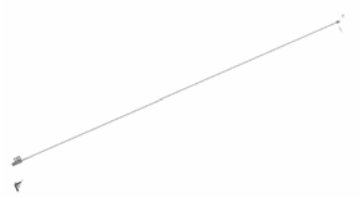
## 212519 - LED strip

Led strip W



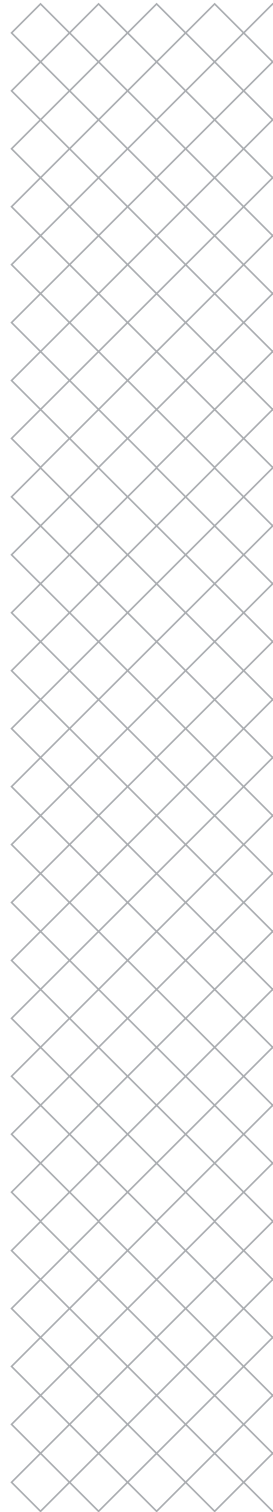
## 212687 - Decoupler cable

Decoupler cable



## 215016 - Door sensor assembly

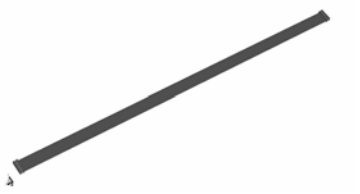
Door sensor assembly



# Cables

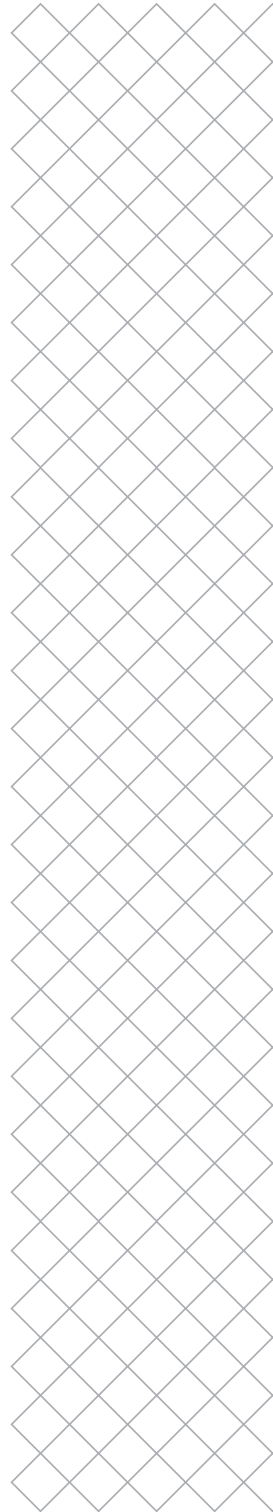
## 212863 - Interface PCB cable

Interface PCB cable



## 214855 - Material Station cable

UM Bus cable L200 Angled/Angled



# Dehumidifier

## 2215649 - Dehumidifier assembly

Dehumidifier assembly



## 212866 - Dehumidifier cable

Dehumidifier cable



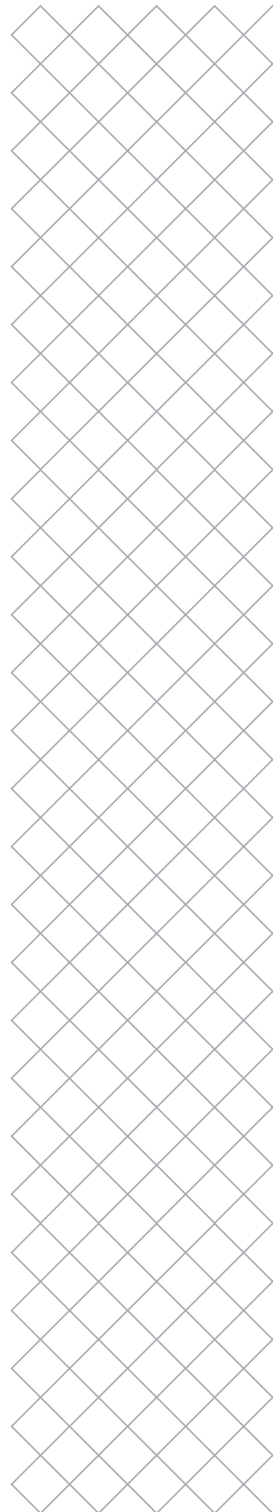
## 215840 - Exhaust top

Exhaust Top



## 215841 - Exhaust bottom

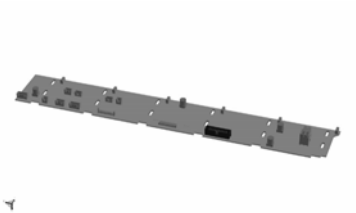
Exhaust Bottom



# Electronics

## 203824 - Mainboard Material Station

MISP mainboard PCBA



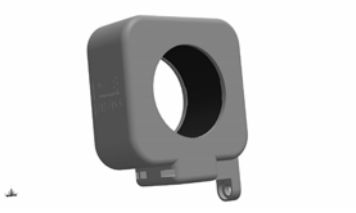
## 215141 - Humidity sensor PCBA

Humidity sensor PCBA



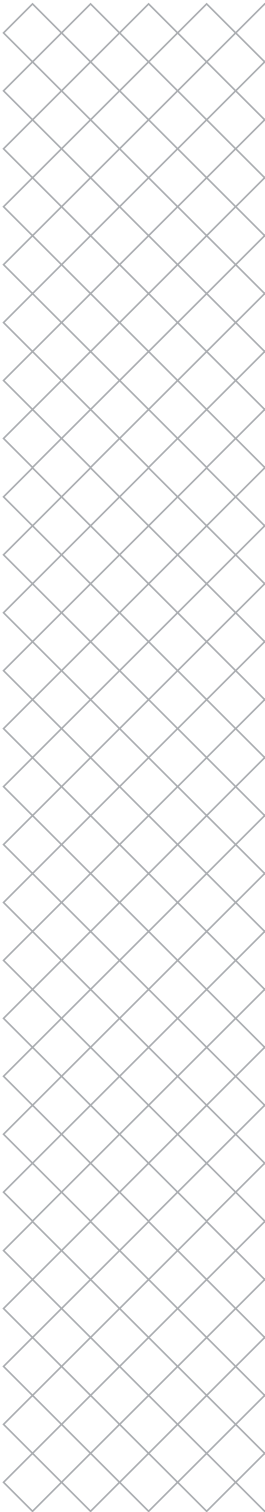
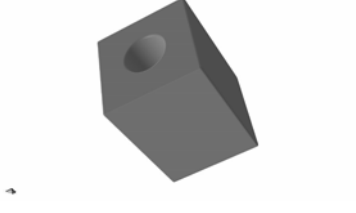
## 210034 - Ferrite core L

Ferrite 7427155



## 1363 - Ferrite core S

Ferrite core



# Extrusion train



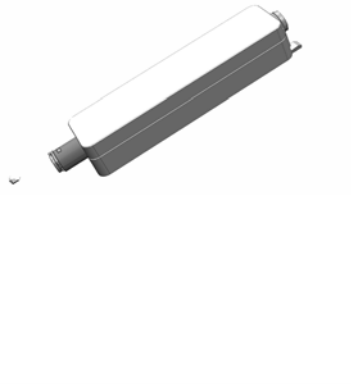
## 217624 - Merger module

Merger Module



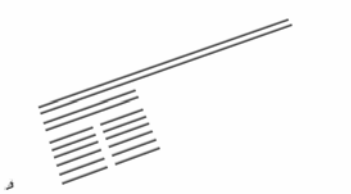
## 213625 - Prefeeder assembly

Prefeeder module



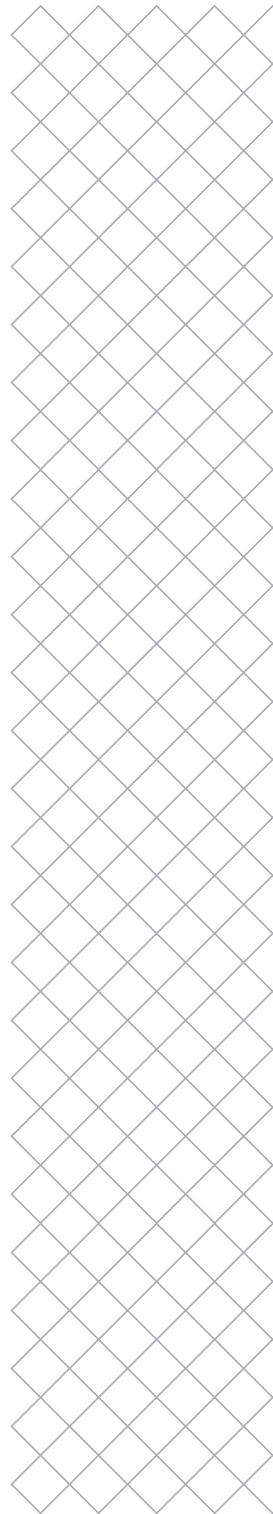
## 215067 - Decoupler assembly

Decoupler module

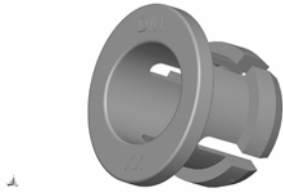


## 219542 - Material Station Bowden set

Material station bowden set







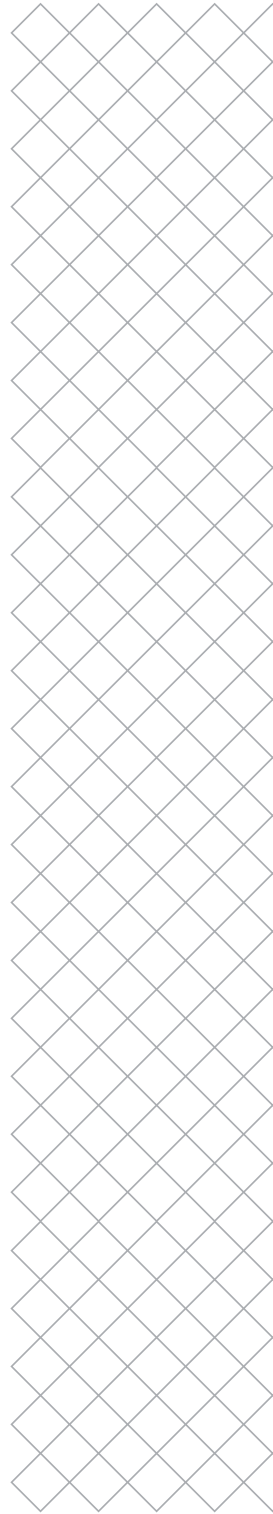
**1069 - Tube coupling collet**

Tube Coupling Collet



**2137 - Clamp clip white**

Clamp Clip White



# Glass door



## 216063 - Glass door assembly

Door assembly MISP outsourced



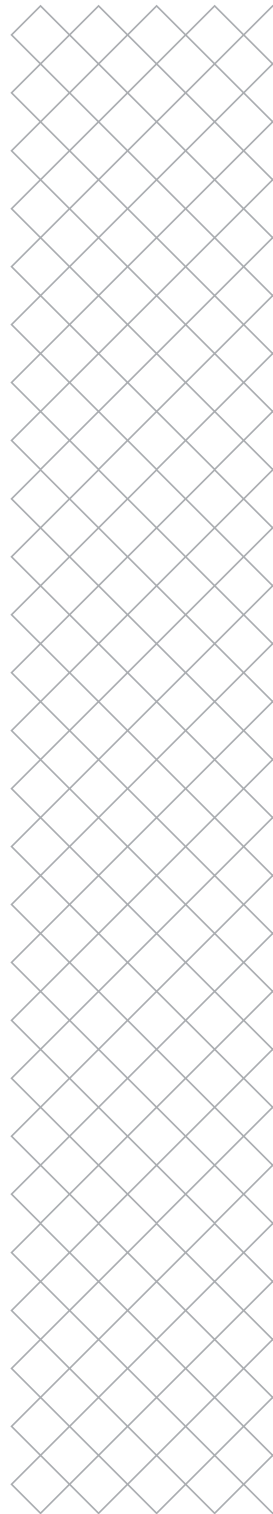
## 219543 - Damper bracket assembly

Damper bracket assembly



## 212439 - Damper arm

Damper arm

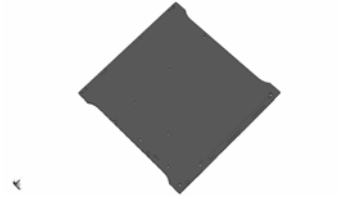


# Housing



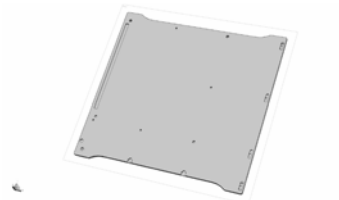
**211685 - Top plate**

Foam top cover



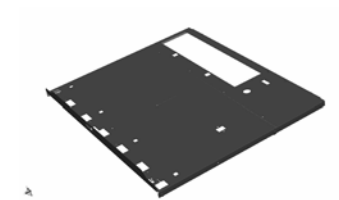
**214534 - Right panel**

Right panel



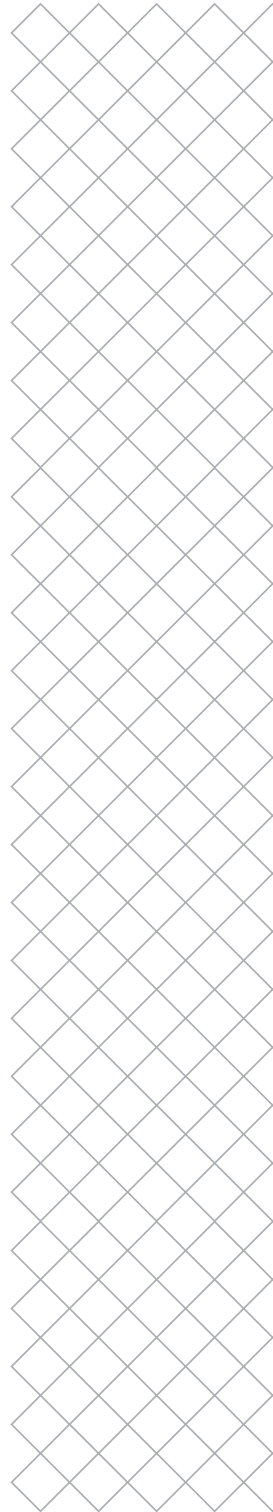
**214536 - Left panel**

Left panel



**211232 - Top panel**

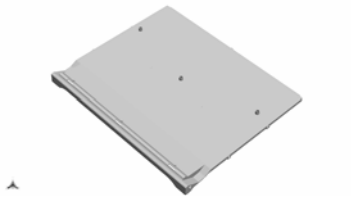
Top panel



# Housing

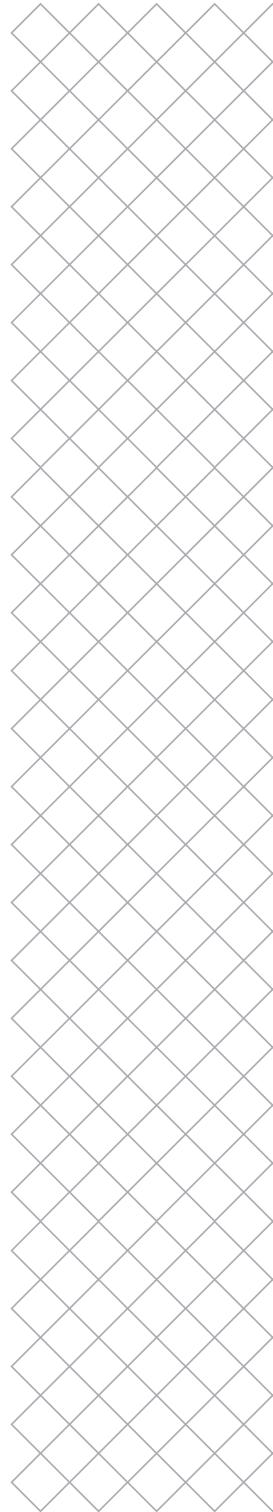
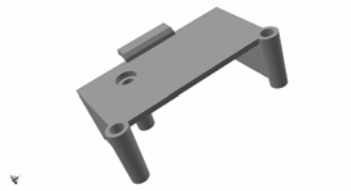
## 214554 - Bottom cover

Bottom cover

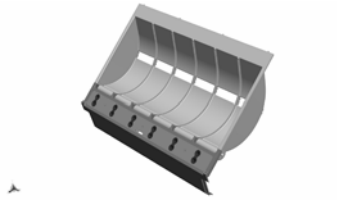


## 212515 - Spacer UltiBus PCB

Spacer PCB Interface

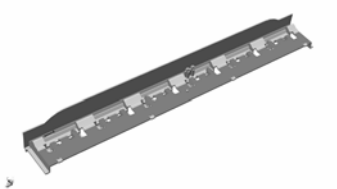


# Interior



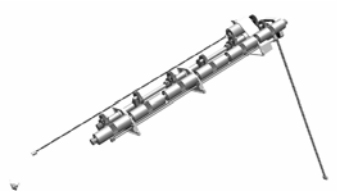
## 214026 - Interior assembly

Interior assembly



## 213909 - Top bracket

Top bracket



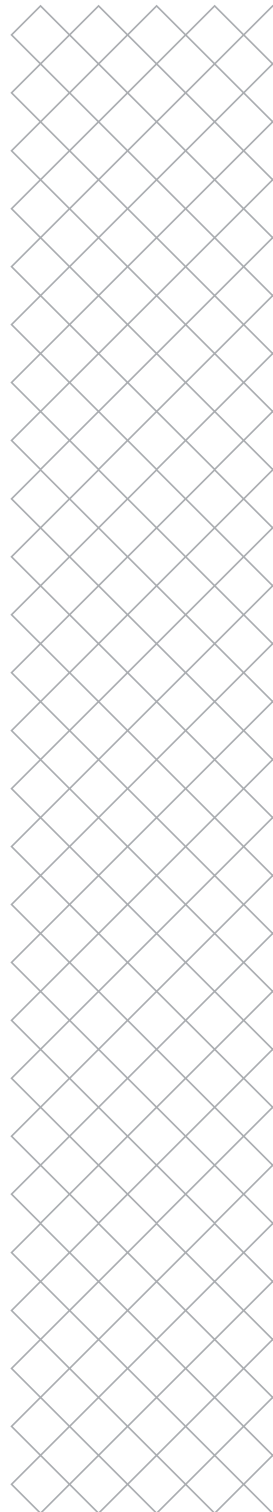
## 211493 - Rewinder assembly

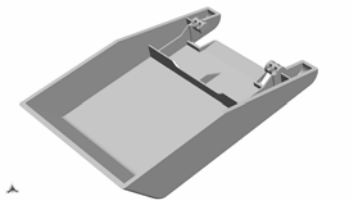
Rewinder assembly



## 214069 - NFC fin assembly

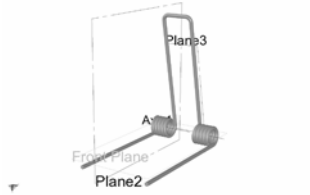
NFC fin assembly





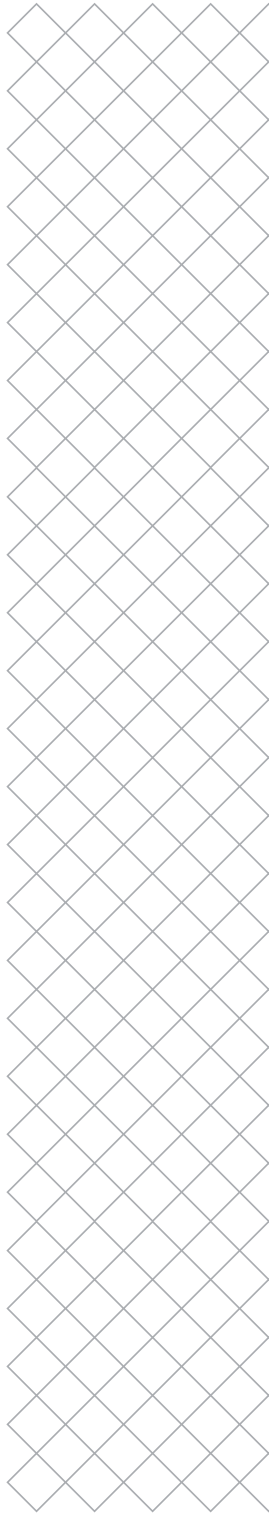
### 214441 - Top arm

Top arm

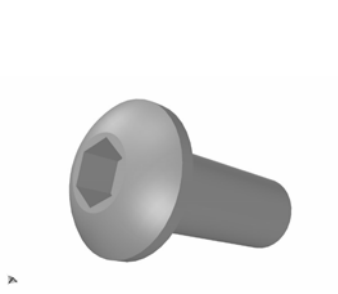


### 214500 - Double torsion spring

Double torsion spring

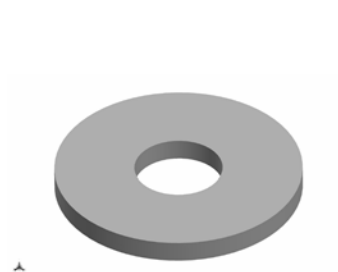


# Nuts & Bolts



**1200 - M3x8 bolt**

ISO 7380 M3X8



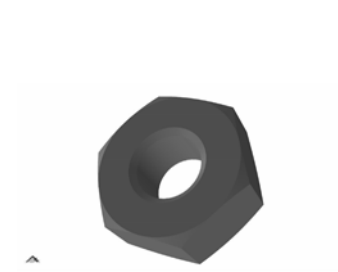
**1201 - Washer M3**

Washer M3



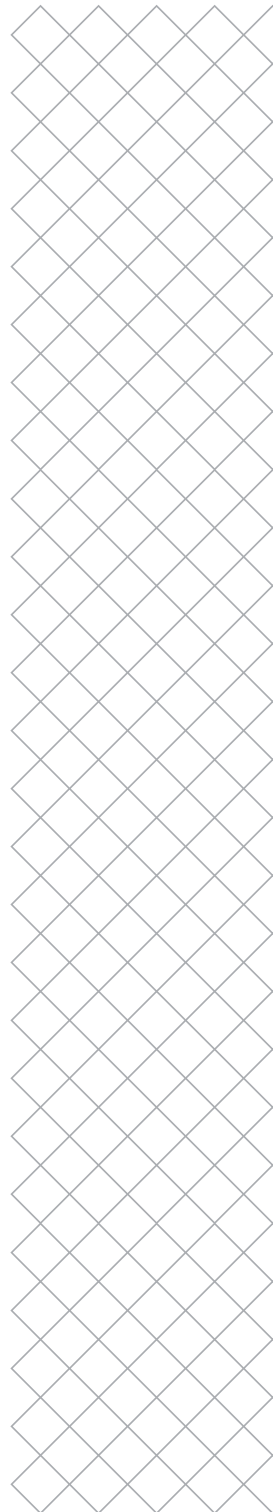
**1207 - M3x25 bolt**

ISO 7380 M3x25

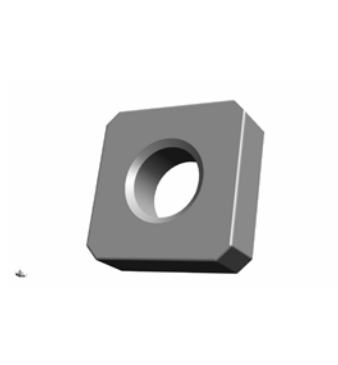


**1209 - Nut M3**

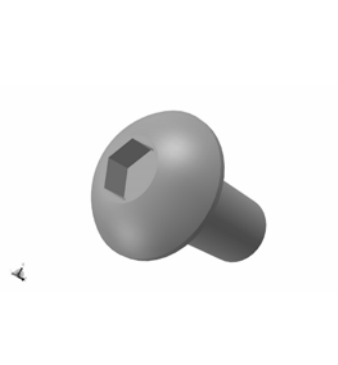
Nut M3



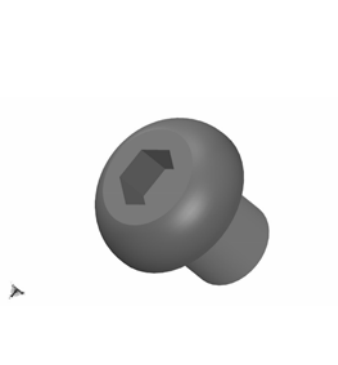
# Nuts & Bolts



**1213 - Square nut M3**  
DIN 562 Square Nut M3 A2



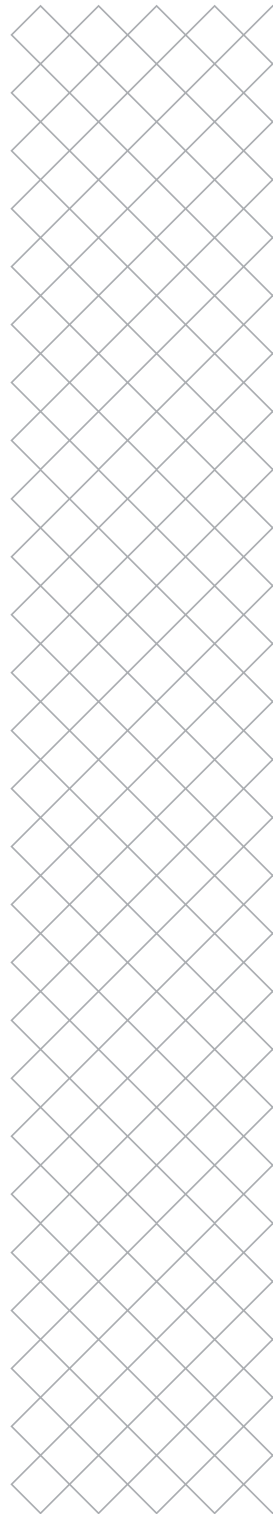
**1292 - M3x6 bolt**  
DIN 7380 M3x6



**1348 - M3x4 bolt**  
ISO 7380 M3x4 A2

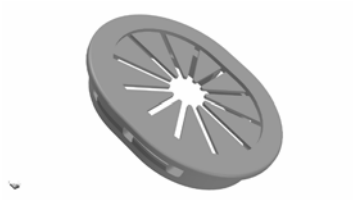


**201205 - Flat head M3X16 bolt**  
Flat head M3X16





# Nuts & Bolts



**212500 - Grommet oval**

Grommet Oval 25x30mm



**212619 - Grommet round**

Grommet round 16mm



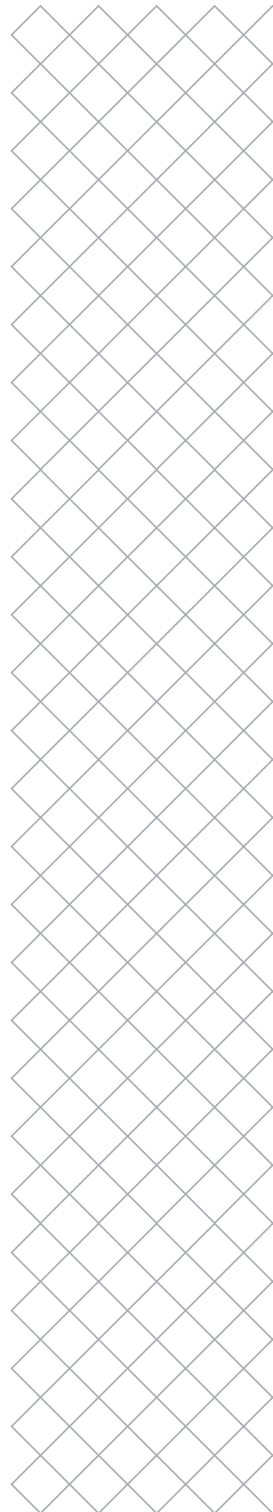
**214522 - Flat head M3x10.5 Trilobe bolt**

Flat head trilobe M3x10.5



**215037 - M3x6 safety Torx bolt**

M3x6 button safety screw



# Nuts & Bolts



## 215629 - Thread-forming screw M2.5x12

Ballhead hexagon 2.5 x 12 (for plastic)



## 216077 - M4x5 bolt

ISO 7380 M4x5



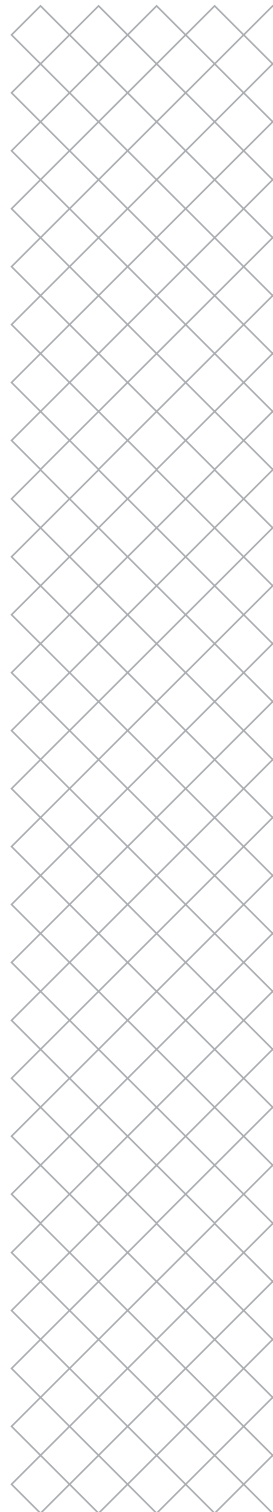
## 216205 - Snap rivet

Plastic snap rivet

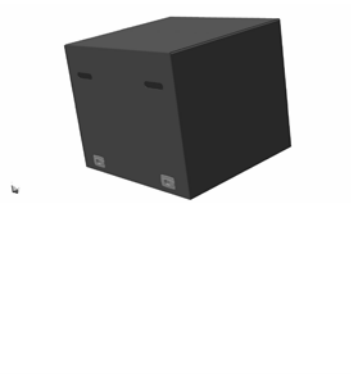


## 215682 - M3x10 Nylok bolt

Hex socket M3x10 with Nylok

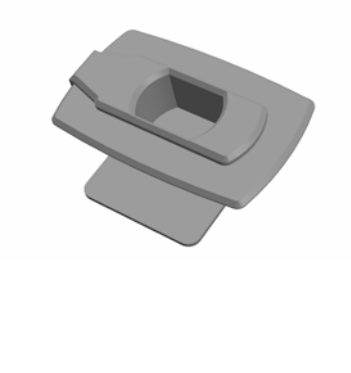


# Packaging



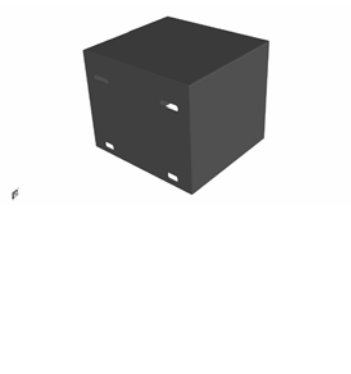
## 217645 - Packaging Material Station

Packaging material station



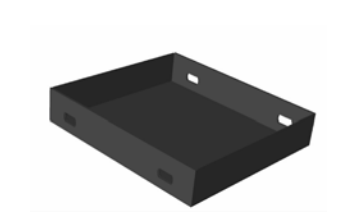
## 206688 - Locking clip

S5Pkg Box locking clip



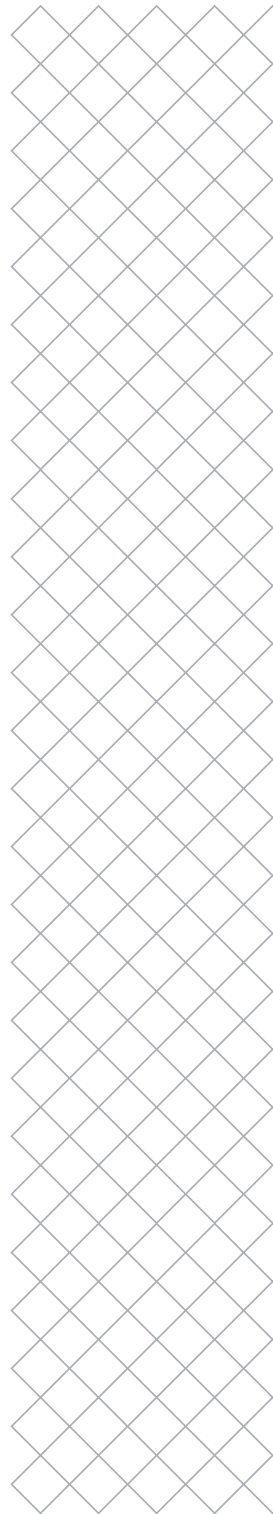
## 217572 -Box Material Station

Material station box



## 2066676 - Packaging bottom tray

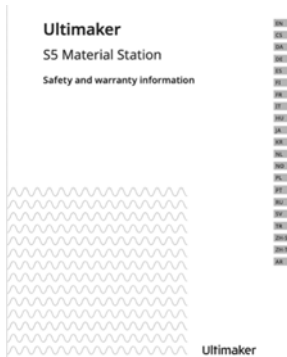
S5Pkg Bottom Tray



# Packaging



**219231 - Quick start guide Material Station**  
Material Station quick start guide



**219233 - Safety booklet Material Station**  
Material Station safety and warranty

