

**RANGE**vision

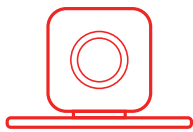
3D SCANNERS



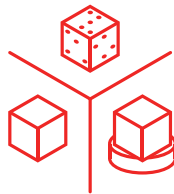
## RANGEVISION 3D SCANNER SPECTRUM

RangeVision Spectrum is a new high resolution 3D scanner based on the safe-to-use structured light technology. It is designed for scanning small, medium and larger objects. The 3D scanner has three fields of view, 3.1 Mpix industrial colour cameras, being equipped with an automatic turntable to enhance your 3D scanning experience and travel case for easy transportation. RangeVision Spectrum captures complex geometry, flat and long objects, as well as small details with constantly high 3D resolution while keeping the accuracy up to 0.04 mm.

### Spectrum of possibilities



**3.1 Mpix industrial colour cameras**  
for highly detailed and full-colour scans



**3 scan modes**  
to render complex geometry  
of any type of object

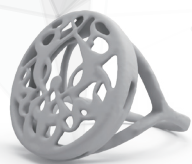


**3 fields of view**  
to capture different-sized objects  
from 1cm to 3m

### Obtain a ready-to-use 3D model for any CAD/CAM, 3D modeling or 3D printing software

User-friendly RangeVision software comes with free updates and it is included in the price of RangeVision 3D scanner. Align and merge 3D scans into a complete digital 3D model without exporting to a separate post-processing software - all necessary functions are build-in:

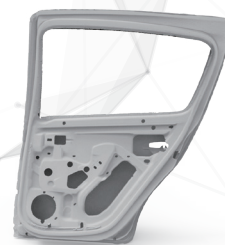
- Manual and automatic scans alignment
- Colour texture
- Holes Filling
- Scans data editing tools
- Simplification of a 3D model
- Export to .STL, .OBJ, .PLY



Small details



Complex geometry



Large objects

## Package contents



1. Two USB-cameras
2. Scanning module with LED projector
3. Automatic turntable
4. Power cable
5. License dongle
6. USB flash with RangeVision 3D scanning software
7. USB-hub
8. Axis evaluation calibration field
9. Calibration field holder
10. Calibration fields
11. Travel case
12. Tripod
13. Quick start guide (inside the case)

## Technical specification

Cameras resolution	3,1 Mpix		
Field of view, mm	520*390*390	280*210*210	133*100*100
3D point accuracy, mm	0.12	0.06	0.04
3D resolution, mm	0.26	0.17	0.072
Align modes	by markers, by geomerty, on the automatic turntable		

Automatic turntable		Hardware	
Platform diameter	125 mm	Case size	515*415*200 mm
Max load	5 kg	Full package in case weight	10 kg

## Spectrum of applications

- Reverse engineering
- Rapid prototyping
- Car tuning, industrial design
- Product design
- Education
- Souvenirs and decor manufacturing